

## TUTORIAL

### Using filters with SNPator

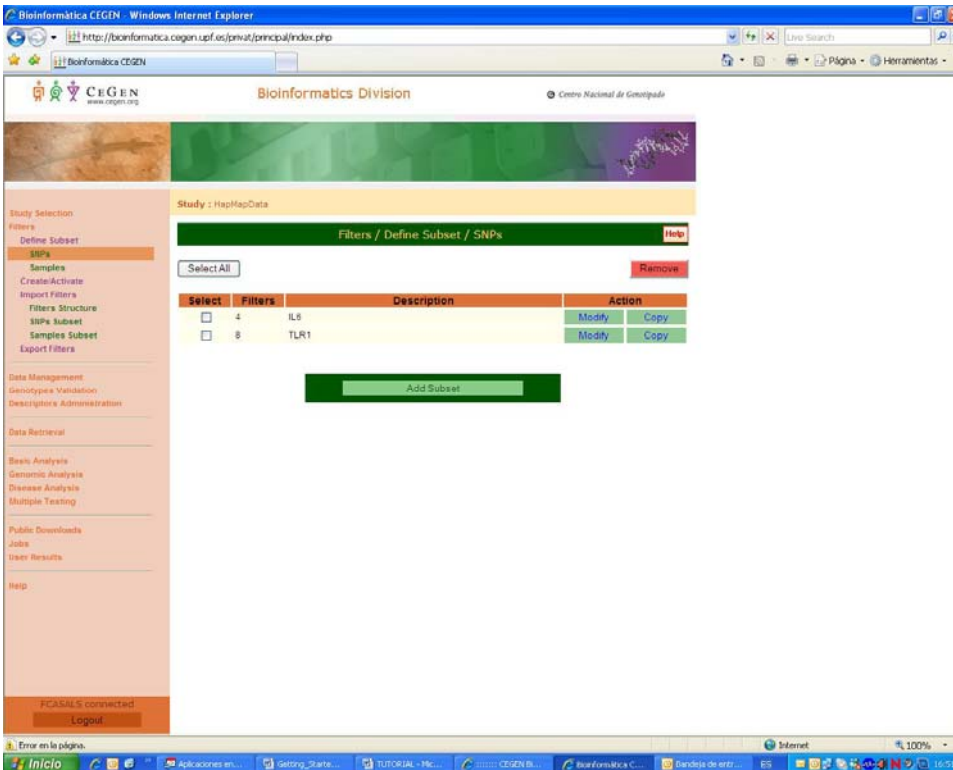
**Filters** in SNPator allows you to work with a part of your data. In absence of filters, SNPator will use all your data in any of the requested process. But you can perform your analysis only in a selected set of samples and / or SNPs by creating a **filter**. When a filter is activated, SNPator works only with the samples and / or SNPs included in this filter (e.g. samples from control individuals or SNPs from a given region).

A **filter** is a set of conditions that a sample or a SNP must accomplish to be included in it. A filter is composed by one or more **subsets of SNPs** and / or one or more **subsets of samples**.

Prior to define a filter, you have to create the subsets.

### SNP Subset

You can create the SNP subsets at the Filter section as follows.

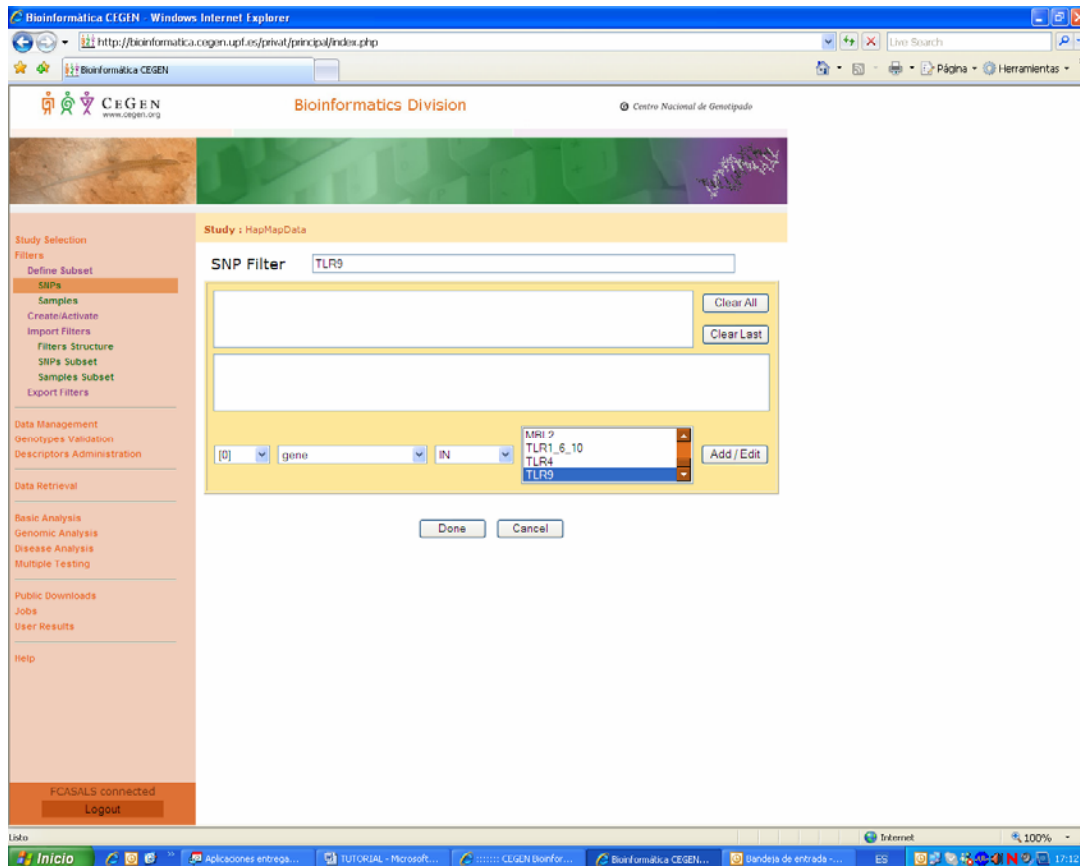


The screenshot shows the SNPator web interface. The main content area is titled "Filters / Define Subset / SNPs". It features a table with the following data:

Select	Filters	Description	Action
<input type="checkbox"/>	4	IL6	Modify Copy
<input type="checkbox"/>	8	TLR1	Modify Copy

Below the table is a green "Add Subset" button. The sidebar on the left contains various navigation options, including "Define Subset", "SNPs", "Samples", "Create/Activate", "Import Filters", "Filters Structure", "SNPs Subset", "Samples Subset", "Export Filters", "Data Management", "Genotypes Validation", "Descriptors Administration", "Data Retrieval", "Basic Analysis", "Genomic Analysis", "Disease Analysis", "Multiple Testing", "Public Downloads", "Jobs", "User Results", and "Help".

By clicking in the **Add subset** window (or at the modify window for the pre-existing filters) you can edit the subset.



Write a name for your SNP filter, and determine what conditions should accomplish a given SNP to be included in it. To do this, you have to choose the fields at the four windows. The first option is just the number of condition. Second, you can choose among all the possible descriptors for your SNPs. In example, if you choose the gene option, all the genes where your SNPs are included will appear at the fourth window. Once you have determined the conditions, click on the add/edit button, and then in the Done button.

### **Sample Subset**

In a similar way to what has been described for the SNP subset, you can define samples subsets, i.e. groups of samples accomplishing one or more conditions.

Study: HapMapData

Filters / Define Subset / Samples [Help](#)

Select All [Remove](#)

Select	Filters	Description	Action
<input type="checkbox"/>	0	CEU	<a href="#">Modify</a> <a href="#">Copy</a>
<input type="checkbox"/>	1	CHB	<a href="#">Modify</a> <a href="#">Copy</a>
<input type="checkbox"/>	2	JPT	<a href="#">Modify</a> <a href="#">Copy</a>
<input type="checkbox"/>	3	YRI	<a href="#">Modify</a> <a href="#">Copy</a>

[Add Subset](#)

## Filters

At the **Create / Activate** section you can create your filters or modify a pre-existing one.

Study: HapMapData

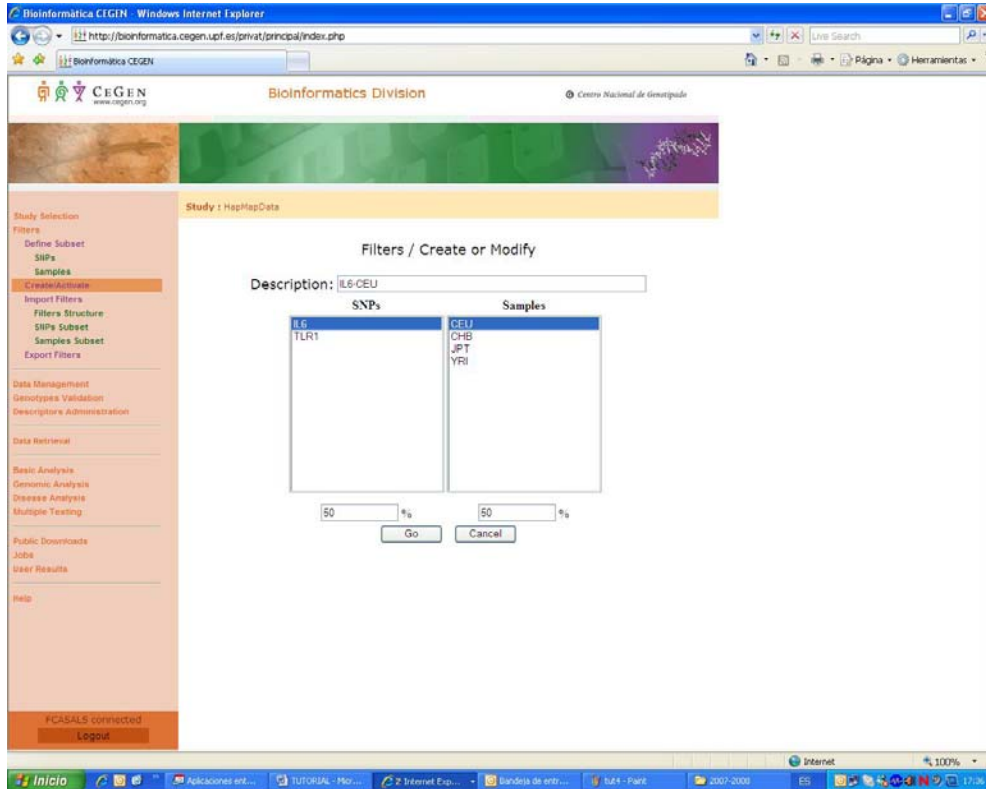
Filters / Create or Activate [Help](#)

Select All [Update](#) [Remove](#)

Select	Id	Description	Updated	Action
<input type="checkbox"/>	5	IL6	Yes	<a href="#">Modify</a> <a href="#">Activate</a>
<input type="checkbox"/>	8	TLR1	Yes	<a href="#">Modify</a> <a href="#">Activate</a>

[Add Filter](#)

Once you have selected the “add filter” or the modify options, you can determine which **SNPs or sample subsets** are going to compose this filter. Write a name for your filter at the descriptor field, and select as many subsets as you want to compose the filter. The % windows allow you to include in the filter only the SNPs or samples above a given threshold of genotyping rate.



Once the filter is created, you can activate it. To do this, go to the create/activate section, and click the Activate option.

Bioinformática CEGEN - Windows Internet Explorer

http://bioinformatica.cegen.upf.es/privat/principal/index.php

Bioinformática CEGEN

Bioinformatics Division

Centro Nacional de Genómica

Study Selection

Filters

Define Subset

SMPa

Samples

Create/Activate

Import Filters

Filters Structure

SMPa Subset

Samples Subset

Export Filters

Data Management

Genotypes Validation

Descriptors Administration

Data Retrieval

Basic Analysis

Genomic Analysis

Disease Analysis

Multiple Testing

Public Downloads

Jobs

User Results

Help

FCASALS connected

Logout

Study: HapMapData, Active Filter: 0 (IL6-CEU)

Filters / Create or Activate

Select All

Update

Remove

Selected	Id	Description	Updated	Action
<input type="checkbox"/>	0	IL6-CEU	Yes	Modify Deactivate
<input type="checkbox"/>	5	IL6	Yes	Modify Activate
<input type="checkbox"/>	8	TLR1	Yes	Modify Activate

Add Filter

Inicio

Aplicaciones en...

TUTORIAL - Mór...

Internet Exp...

Bandeja de entr...

EstS - Paint

2007-2008

Internet

100%

17:45